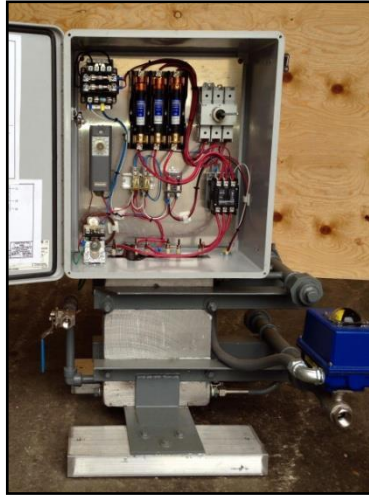


## CARBON DIOXIDE VAPORIERS ELECTRIC PRESSURE BUILD (CAST TYPE)



MODEL	CT-15KW-C	CT-30KW-C	CT-45KW-C	CT-60KW-C	CT-75KW-C	CT-90KW-C
CAPACITY	15 KW	30 KW	45 KW	60 KW	75KW	90KW
FLOW RATE (lbs/hr)	375	750	1125	1500	1875	2250
WEIGHT	220	278	300	340	340	400
CONNECTION SIZE (inlet)	3/4"	1"	1"	1"	1"	1"
(outlet)	1"	1-1/2"	2"	2"	2"	2"

*The ideal solution to your vacuum jacket tank low pressure problem.*

*Carbon Dioxide Equipment  
Call for current prices and availability*

**CARBO TECH, INC.**

**CO<sub>2</sub> Equipment**

P.O. Box 1938 • 828 Hwy. 11 S.E. • Monroe, GA. 30655-1938

E-Mail Address: [salesinformation@carbotech.com](mailto:salesinformation@carbotech.com)

Website Location: [www.carbotech.com](http://www.carbotech.com)

Phone: 770-267-8821 Fax: 770-267-7286

Toll free: 877-267-9821

## AMP DRAW FOR CAST TYPE PRESSURE BUILD VAPORIZERS

---

---

MODEL	AMPS @ 240 VOLTS	AMPS @ 480 VOLTS
CT-15KW-C	36	18
CT-30KW-C	72	36
CT-45KW-C	108	54
CT-60KW-C	145	72
CT-75KW-C	182	90
CT-90KW-C	217	108

---

*Carbon Dioxide Equipment  
Call for current prices and availability*

***CARBO TECH, INC.***  
***CO<sub>2</sub> Equipment***

*P.O. Box 1938 • 828 Hwy. 11 S.E. • Monroe, GA. 30655-1938*

*E-Mail Address: [salesinformation@carbotech.com](mailto:salesinformation@carbotech.com)*

*Website Location: [www.carbotech.com](http://www.carbotech.com)*

*Phone: 770-267-8821 Fax: 770-267-7286*

*Toll free: 877-267-9821*