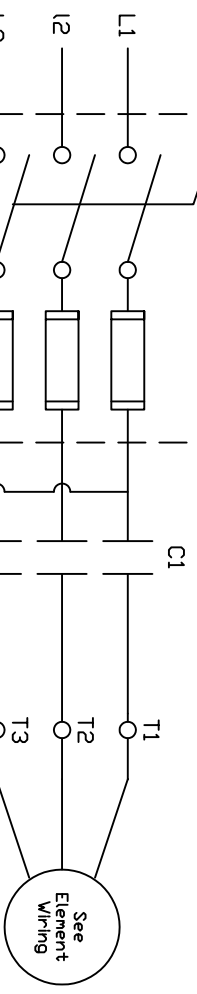


Disconnect Supplied By Others

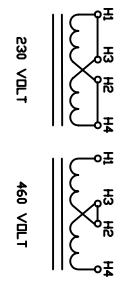
C1 9 & 18 KW - CH P/N C25DNF340A
 28 KW - CH P/N C25FNF360A
 56 KW - 2 ea. CH P/N C25FNF360A



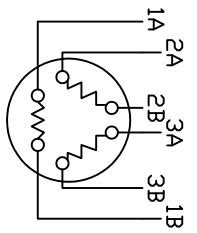
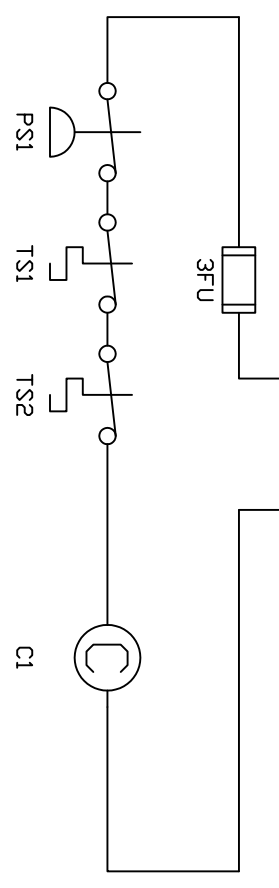
See Element Wiring

Heating Element
 9KW - P/N 300XCF-9-230-25-SSLT
 18KW - P/N 300XCF-18-230-46-SSLT
 28KW - P/N 300XWF-28-230-42-SSLT
 56KW - 2 ea. P/N 300XWF-28-230-42-SSLT

Transformer Wiring



Control Transformer
 100VA, 150 VA on 28 KW, 56KW



Models CT-9KW & CT-18KW
 For 230 Volt:

- 1) T1 to 1A & 2B
- 2) T2 to 2A & 3B
- 3) T3 to 1B & 3A

For 460 Volt:

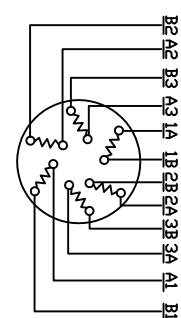
- 1) T1 to 1A
- 2) T2 to 2A
- 3) T3 to 3A
- 4) Tie 1B, 2B, 3B together.

For 230 Volt:

- 1) T1 to A3-1B-2A-3B
- 2) T2 to 1A-B3-A2-A1
- 3) T3 to 2B-3A-B1-B2

For 460 Volt:

- 1) T1 to 2A-3B
- 2) T2 to 1A-B3
- 3) T3 to B2-B1
- 4) Tie together:
 1B-2B
 A3-A2
 A1-3A



Models CT-28KW & CT-56KW

3FU	2 AMP
PS1	A-B P/N 836-A4
TS1,2	P/N 16031A-1136
1,2FU	1 A.-230 V., 1/2 A.-460 V.
28KW	1.5 A.-230 V., 1 A.-460 V.
ITEM	DESCRIPTION
PARTS LIST	

3	Added 56kw	3-23
2	28 KW Change P/N	4/19
1	Contactor Change P/N	7/21 88
NO.	DESCRIPTION	DATE
REVISIONS		

Carbo Tech, Inc.
EquipMent

P.O. Box 1938 -- Monroe, Georgia 30665

Pressure Build Vaporizers
 Wiring Diagram

DRN BY: J.W.W. SCALE: NONE
 CKD BY: DATE: 8/25/87
 VAP-004-24